

- 1- Central fastening for grille
- 2- Screws to tightened holding clamps
- 3- Holding clamps
- 4- Fastening springs
- 5- Connecting strip
- 6- Sensitivity adjustment

**For flush-mount installation: 145 mm hole.
Minimum required depth: 60 mm.**

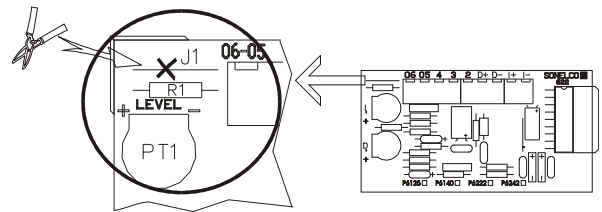
DESCRIPTION

4" / 4 Ohm wide band speaker assembly with stereo 5+5W amplifier, mounted on a white plastic body, with possibility of adapting different grille centres and trim. It can be secured with springs or clamps.

CONNECTION

TERMINALS

- terminal 2: +16V supply
- terminal 3: Supply input +16V. **See Note (*)**
- terminal 4: Ground
- terminal 05/06: Left and right audio input
- terminals D+, D-: Output for 4", 4 Ohm speaker corresponding to the right-hand channel



(*) Note: Terminals 2 and 3 are connected internally in this active speaker with bridge J1, which we can cut, if we wish, permitting two connection modes.
J1 not cut (see example "a"): the supply can be connected indifferently to terminal 2 or 3.
J1 cut (see example "b"): terminal 2 acts as supply input and terminal 3 acts as ignition control.

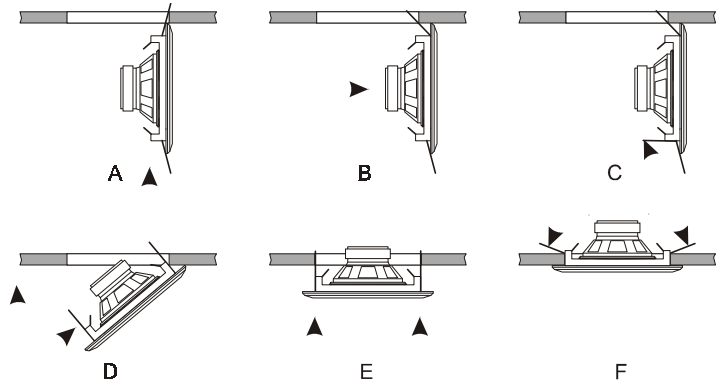
INSTALLATION METHODS

1 - WITH SPRINGS

Installation with springs is especially recommended for all sorts of hollow ceilings (false ceilings, modular ceilings, etc...), where there is a false ceiling depth of at least 60 mm. Diameter of recess hole: 145 mm.

First, place the springs onto their supports, as shown in the figure and attach the ceiling speaker to its corresponding wires.

- A - Insert one of the springs into the hole for recessing.
 - B - Move the ceiling speaker sideways until the spring is taut.
 - C - Push the other spring, with your hand, towards the rear end of the speaker, guiding it towards the hole.
 - D - Still pressing on the spring with your hand, turn the ceiling speaker until you manage to insert the end of the second spring into the hole.
 - E - Once the end of the spring has been inserted inside the hole, stop pressing it with your hand and now gently push the speaker upwards.
 - F - The springs will open up, securing the speaker against the ceiling.
- If you later wish to remove the speaker from the ceiling, just pull gently sideways and downwards until the end of the spring comes out. Press it with one hand in order to prevent it from opening forcefully, and continue pulling downwards until it is totally extracted.



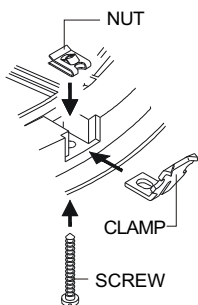
2 - WITH CLAMPS

Installation with clamps is recommended for recessable casing mod.P4904 for solid ceilings, or for hollow ceilings in which the use of springs is not possible, usually due to the ceiling's thickness.

Before installing the speaker, it is necessary to mount the clamps onto the supports, connecting them with the corresponding wires.

In order to secure the ceiling speaker with the clamps, just insert the speaker inside the hole (sometimes it may be necessary to loosen the clamp's tightening screws a little) and tighten the screws so that the clamps open up, securing the ceiling speakers. It is recommended that you tighten the three screws equally. If later you need to remove the speaker, just loosen the screws and the speaker will come out.

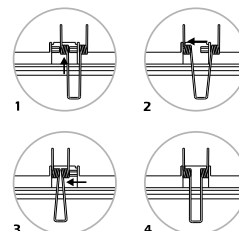
FITTING THE CLAMPS ONTO THE GRILLE



Place the clamp in its recess, insert the screw through the grille and clamp and screw the rectangular retaining nut onto the end of the screw. Tighten the nut until it is level with the grille, allowing the clamp some freedom of movement

Repeat the process with the two other clamps and run the rubber band around the ends of the three clamps, so that they are tightly pressed against the inner part of the grille, thus facilitating the placement and removal of the grille in the hole.

FITTING THE SPRINGS IN THE GRID



Fit one end of the spring first, inserting it between both pins (1), and pressing inward, fit it on its pin, so that the free end of the spring fits inside the notch provided (2). Repeat the process with the other end of the spring (3 and 4).

INSTALLATION EXAMPLES

a) Installation 1 stereo music channel. Example for zones with 2 active speakers (P6222) with one single control (Bridge J1 not cut). Connection to control with four wires, (See diagram 1).

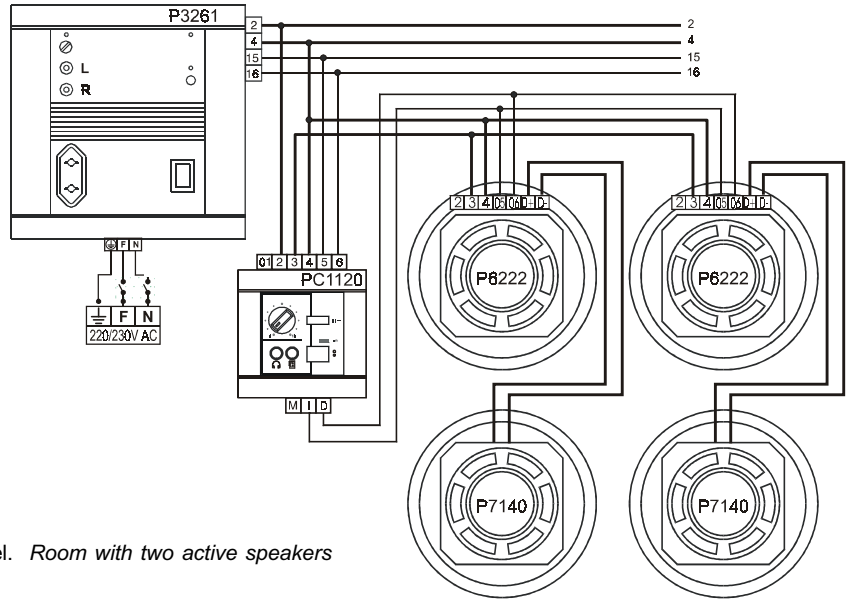
In this type of connection the whole active speaker consumption is obtained through the control, **and it is only recommended when a maximum of 2 active speakers are connected to the control.**

Estimating that for music + messages, the average consumption of an active speaker is 715 mA, (65% of the maximum), with a control through its terminal 3, we will only be able to obtain current to supply 2 active speakers at the most.

The diagram shows an installation with two active speakers P6222. The 4" / 4 Ohm P7140 is recommended as auxiliary speaker for the right-hand channel. As can be seen in diagram 1, the active speakers are connected to the control with four wires connected to terminals 3, 4, 05 and 06.

Note: The control or the main unit could be any from the Prestige series. Do not forget to place the mono/stereo switch of the control in stereo position.

Diagram 1. 1 stereo channel. Room with two active speakers



b) Installation 1 stereo music channel. Example for zones with more than 2 active speakers (P6222) with one single control. (Bridge J1 cut). Connection with five wires. (See diagram 2)

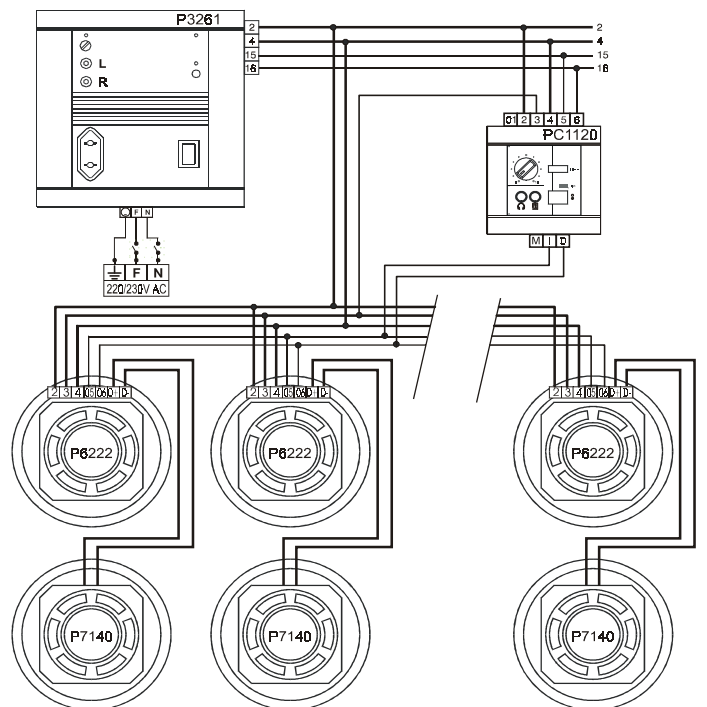
If you wish to control more than 2 active speakers, with one single control, the connection to the control must be made with five wires, cutting bridge J1 in all of them, see Note (*) in "CONNECTION" section.

As can be seen from diagram 2, the active speakers are connected with five wires to terminals 2, 3, 4, 05 and 06. One more wire is used but the no. of active speakers desired can be controlled with one single control, as unlike the previous case the consumption of the active speakers is done from wire 2 of the line and the wire connected to terminal 3 acts as control for the internal electronic switch.

As an example, diagram 2 shows an installation with 1 stereo music channel with more than 3 active speakers P6222. As in the previous example the 4" / 4 Ohm P7140 are used as auxiliary speakers for the right-hand channel. A greater number of them could be fitted depending on the power of the unit, which in our case is the P3261.

Note: The control or the unit could be any from the Prestige series. Do not forget to place the Mono/stereo switch of the control in stereo position.

Diagram 2. 1 stereo channel. Room with more than 2 active speakers.



TECHNICAL CHARACTERISTICS

Rated supply volt. (V2): 16V DC
 Maximum current consumption (I2): 1.1 A.
 Consumption without signal (I2): 90 mA.
 Terminal 3 (With bridge J1 cut):
 - Minimum ignition volt. (V3): >8.5V
 - Current consumption (I3): 10 mA
 Power: 5+5 W, d<0.5%
 Sensitivity: 1.5V
 Frequency response: 120 Hz – 15kHz (-3dB)
 Signal/Noise ratio: >70dB
 Dimensions: 174 x 69 mm
 Weight: 420 grams

ADAPTABLE GRILLE CENTRES

Two different models of grille centres are available for these 4" active speakers, which are fastened in the centre with a screw and cap for the screw.

Mod. P4281 – Plastic material
Mod. P4282 – Metal

In addition, as an option a metal trim ring can be fitted, which is secured between the grille centre and the active speaker. (See catalogue price list).