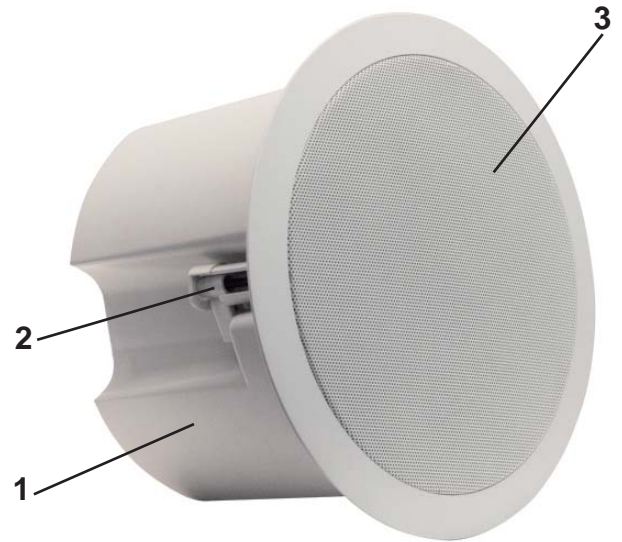
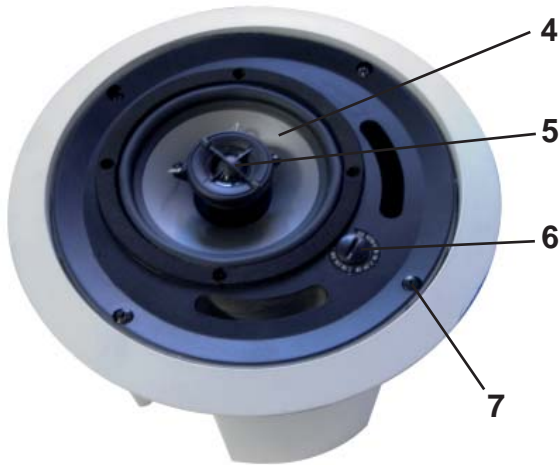


CONFIGURABLE LOUDSPEAKER - P7252

Assembled with protection shield and metal grid

4FA034901



1 - Metal grid. 2 - Fixing support. 3 - Protection shield 4 - 5" woofer loudspeaker. 5 - 13 mm. Tweeter 6 - Mode selector. 7 - Fixing screws

DESCRIPTION

Configurable 2-way loudspeaker with Bass Reflex system. 5" Woofer and a 13 mm. tweeter.

High quality sound for use as a 100V Line loudspeaker with power from 0.25 to 30W (6 dB gaps), or as a 4 Ohm./25W (max. 50W). impedance loudspeaker.

For installation in a suspended ceiling, provided with a white metal grid and a protection shield.



Selection mode in the 30W position, for operating as a 100V Line loudspeaker.

TECHNICAL CHARACTERISTICS

4"/ 4 Ohm loudspeaker. Nom. power 25W / max. 50W Line input: 100 V

Power: 0,25/0,5/1/2,5/5/7,5/15/30W.

Frequency response: 65Hz - 20kHz (10dB)

Loudspeaker sound pressure level: 88 dB ± 3dB 1W, 1m.

Dimensions : 240 Ø x 142 mm
Approx. weight : 2.005 gr.

2- For installation in a suspended ceiling, a Ø 195 mm. hole should be made. Once wired up, remove the metal grid (3) put the loudspeaker in the hole, and then put the fixing supports in place fixing them into position by means of tightening down the screws (7).

Once in place, replace the grid (3).

OPERATION

1 – The loudspeaker can operate as a passive 4 Ohm. loudspeaker, or as a 100V Line loudspeaker, depending on the position selected on the mode selector (6).



Selection mode in the 4 Ohm position, for operating as a passive loudspeaker.