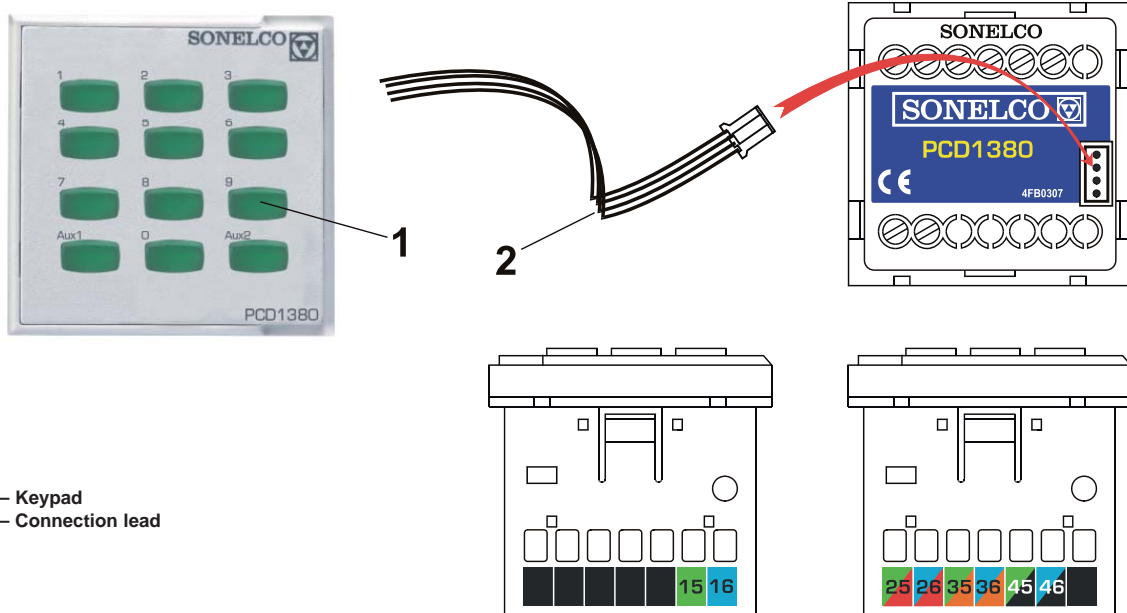


4FA020301

DIRECT ACCESS MODULE TO ZONES – PCD1380 AND CHANNEL EXTENSION



1 – Keypad
2 – Connection lead

DESCRIPTION

Numerical direct access keypad to zones and extension from 2 to 4 channels. In combination with PCD1307 module, it permits rapid access to the desired zone

GENERAL CHARACTERISTICS

- PC format module
- Numerical keypad 0 – 0 and two auxiliaries.
- Keypad with lighting.
- Channel connection with screwed terminal strips.

CONNECTION

Before proceeding to make the connection, make sure that the power supply is switched off. Insert the control into the metal base plate and carry out the connection according to the following indications:

TERMINALS:

CN1 (4-way connector) – To connect to module PCD1307

Only if you want 4 channels:

5- Selected audio channel left output (connect to terminal 25 of PCD1307)

6- Selected audio channel right output (connect to terminal 26 of PCD1307).

25- Channel 2 audio input (left).

26- Channel 2 audio input (right)

35- Channel 3 audio input (left)

36- Channel 3 audio input (right)

45- Channel 4 audio input (left)

46- Channel 4 audio input (right).

IMPORTANT: Connect the module with lead (2) to control PCD1307, before activating the power supply from the general system.

NOTE: The system wiring must be installed separately from the electrical mains, according to regulation

TECHNICAL CHARACTERISTICS

Rated consumption: 20 mA
Power supply voltage: 16 V dc

Dimensions: (L X W x D): 45x45x45 mm.
Weight: 50 grams

OPERATION

Make sure that the 4-way connector has been connected between module PCD 1307 and module PCD1380.

Switch the power on.

When the power is switched on module 1307 will automatically recognise the existence of extension module PCD1380.

After making the automatic recognition, the PCD1307 will allow you to select one of the four channels.

To make the call to a zone, directly key in the zone number. The zone number selected and the associated name will appear on the display. Press the call key on module PCD1307 to send the message.

INSTALLATION EXAMPLE

The installation shows the connections to be made when 4 channels are installed.

If there are not 4 channels, only the connection lead needs to be connected

